

A

E

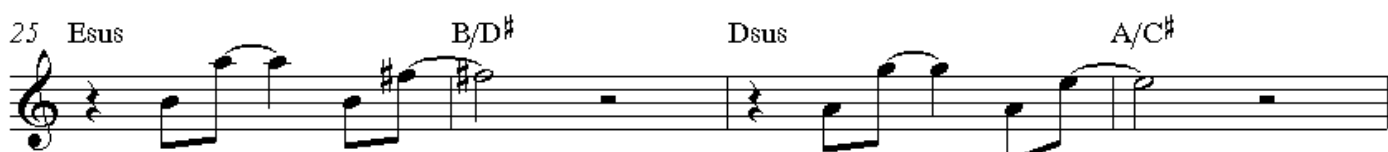
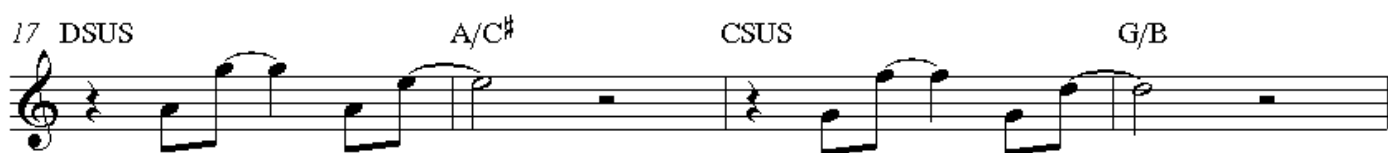
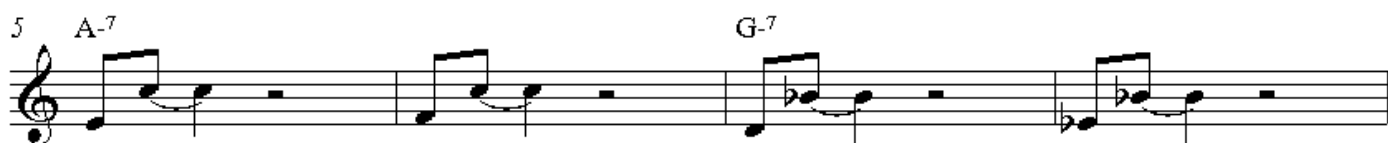
B-6

9

Handwritten musical notation on a four-staff system. The notation includes various chords and melodic lines. Chords are labeled with letters and numbers, such as C7b9, Asus, F-6, E/D, Csus, C, F-6, Bb/A, A5, F5us, Bb9, Bb, Bb, and Asus. Melodic lines are written on the staves, often with accidentals (sharps and flats) and ties. The notation is somewhat informal and appears to be a student exercise or a personal sketch.

fill 0

J B



INTERLUDE ON QUE TILL READY

